



Church Gate Community Centre LUTTERWORTH

BUILDING
COMMUNITY
TOGETHER



Our vision

A truly **accessible, inclusive & versatile** community space.

To fully renovate & refurbish the community centre in a meaningful way, supporting existing projects, signposting essential services, & creating a space which is inviting, user-friendly, fit-for-purpose & actually benefits the Lutterworth & surrounding area community.



This is an artistic render only. There is a graveyard on this site.



Community centred approaches are critical to public health & well-being.

The long term value.

We aim to completely renovate & refurbish this community centred space for vital existing projects such as Foodbank and other core community groups. Following on from the challenges and restrictions we have all observed and endured during the Covid crisis and indeed the closures of services such as the United Reform Church & the One Stop

Shop in Lutterworth we know that a community centre which is truly accessible is now more important

“Our research finds that Covid-19 has led to tens of thousands of new people needing to use a food bank for the first time.”

than ever, maybe even critical.

“Communities throughout the country have shown enormous resilience in helping more people than ever before. But food banks and other community charities cannot continue to pick up the pieces. None of us should need a charity’s help to put food on the table. Our research finds that Covid-19 has led to tens of thousands of new people needing to use a food bank for the first



We cannot afford to lose any more community centric organisations. We must invest in the long term value of community centred initiatives.

A community centre which signposts vital services & brings people from all walks of life together has limitless social value.



time. This is not right. If we don't take action now, there will be further catastrophic rises in poverty in the future."

EMMA REVIE, CHIEF EXECUTIVE OF THE TRUSSELL TRUST

Community-centred approaches can be critical for health and well-being too. The NHS supports that communities are vital building blocks for public health.

"The quality of community life, social support and social networks are major influences on individual and population health, both physical and mental. Critical factors include how much control people have over resources and decision-making

and how much access people have to social resources, including social networks, and communal capabilities and resilience. Good social relationships and engagement in community life are necessary for good mental health, & may offer protection in adversity or where there is exposure to stressors Compelling evidence from a meta-analysis of 148 studies on social relationships and mortality risk shows that communities 'with strong social relationships are likely to remain alive longer than similar individuals with poor social relations."

Assets that can support positive health and well-being include:

- The skills, knowledge, social

competence and commitment of individual community members

- Friendships, intergenerational solidarity, community cohesion and neighbourliness within a community
- Local groups and community and voluntary associations, ranging from formal organisations to informal, mutual aid networks such as babysitting circles
- Physical, environmental and economic resources within a community
- Assets brought by external agencies –public, private and third sector



A healthy community creates pathways to participation.

Volunteering and active citizenship is vital for Lutterworth & the wider community

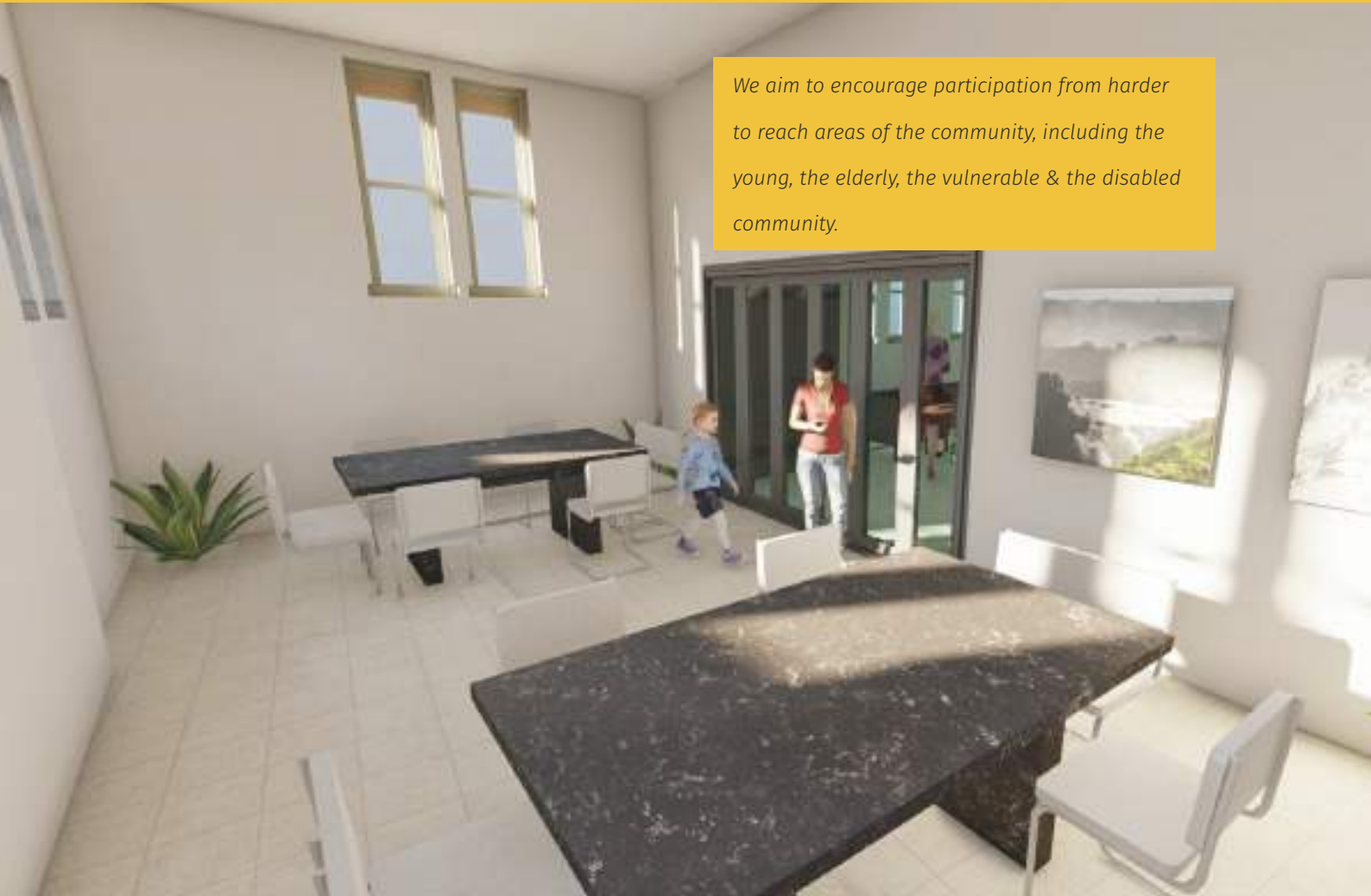
We envision the Community Centre being staffed and ran by volunteers from Lutterworth and the wider area in a truly inclusive manner, to promote young leaders, inclusivity & participation for people with disabilities and wider participation in community life.

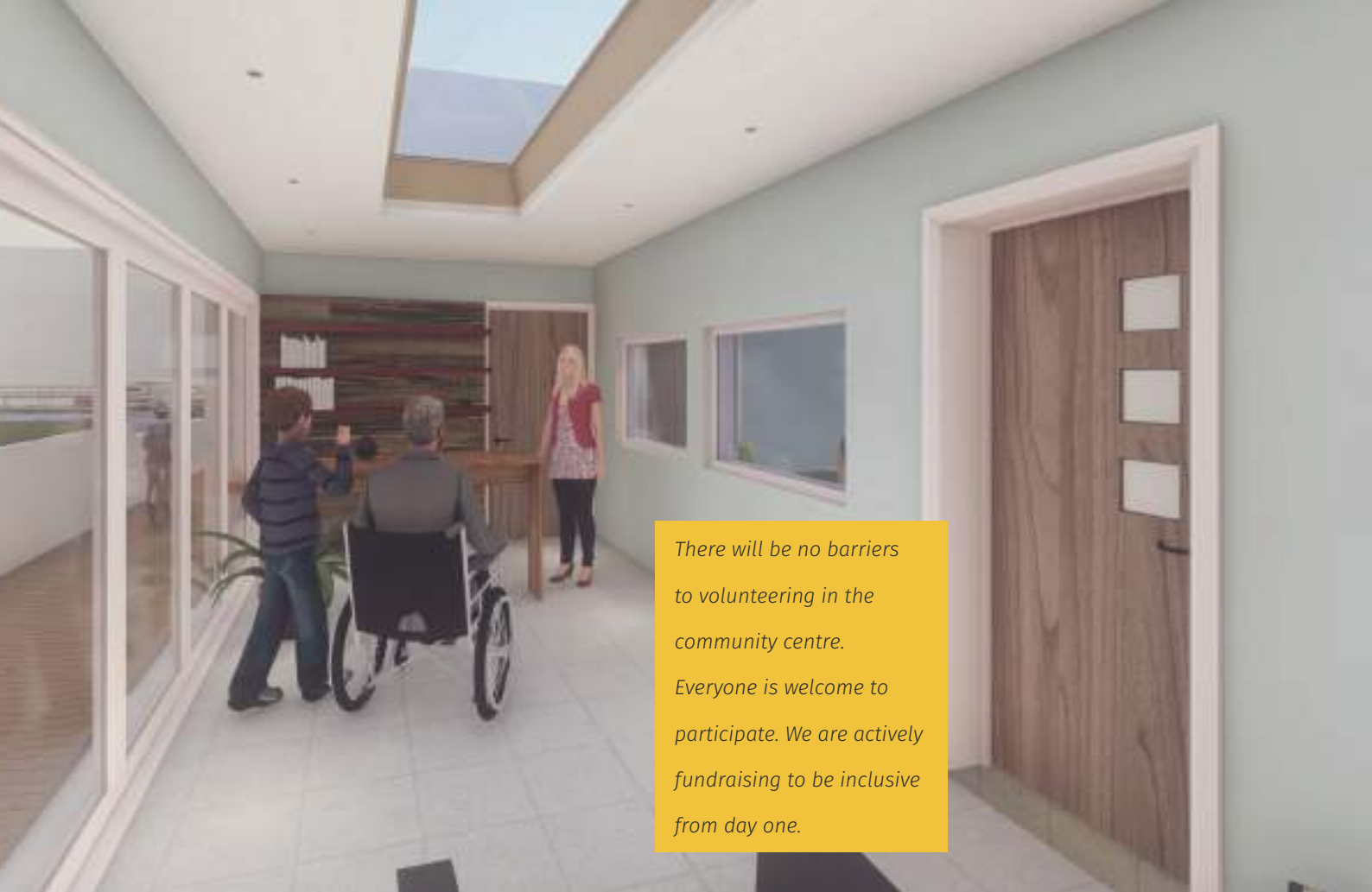
“Volunteering is a form of participation and an important part of the social fabric in England, occurring across most of the wider determinants of health including: sport and exercise, education, justice, arts and culture, children and young people, older people, neighbourhood and citizens groups, conservation, environment and heritage, as well as health and care.

Studies show participation in volunteering is strongly associated with better health, lower mortality, better functioning, life satisfaction and decrease in depression.”



We aim to encourage participation from harder to reach areas of the community, including the young, the elderly, the vulnerable & the disabled community.





There will be no barriers to volunteering in the community centre. Everyone is welcome to participate. We are actively fundraising to be inclusive from day one.



We feel strongly that there should be no barrier to volunteering and that is another great advantage of truly accessible spaces and facilities throughout the building. We know that opportunities for volunteering if you have a disability of any kind can be more limited and here at this stage of our thinking and planning for the community centre they do not need to be – there is no cause for limiting either our thinking or the opportunities we can create here for the whole community;

Justin Davis Smith, executive director of volunteering and development at the National Council for Voluntary Organisations, says that hiring a range of volunteers can have benefits for the charity and the volunteers themselves.

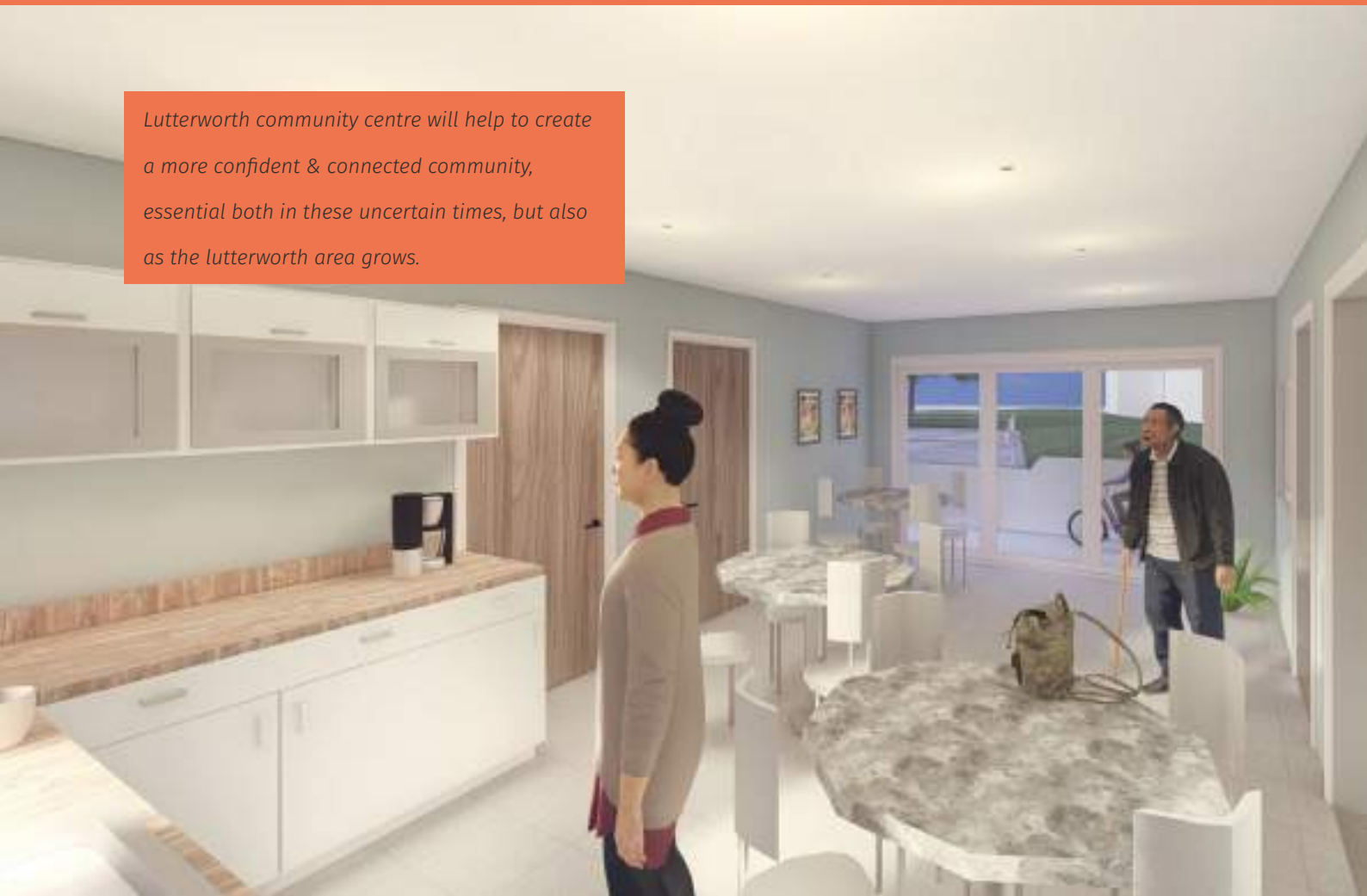
“There’s a social justice issue here if only certain people can get the benefits of volunteering,” he says. “And, if charities have a diverse volunteer group, the quality and reach into the communities that they serve will be enhanced.”

Creating pathways to participation

We want to strengthen & empower the community of Lutterworth, create greater social cohesion and pathways to participation within that community. We believe that there are not only some parts of the community who 'fall between the gaps' in terms of the health and education sector and some who are harder to reach due to illness or incapacity but also many who are simply looking for a reason or a way to connect. We know we can't cover every base but we have outlined several ideas for creating pathways to participation:



Lutterworth community centre will help to create a more confident & connected community, essential both in these uncertain times, but also as the Lutterworth area grows.





The lawn pictured is, & will continue, to be a graveyard. This is an artistic render only.

Peer support occurs naturally between people & has certainly become more important over the covid 19 crisis.



- 1. Free use of Laptops & public wifi*
- 2. A servery area which is accessible for socialising and informal meeting*
- 3. Access & signposting to community services in the Lutterworth Area via a contact hub which will be manned by volunteer support*
- 4. Connectivity with a wide range of other voluntary and educational groups. I.e. arts programs, organised events, community initiatives*
- 5. Meeting rooms for local organisations (booking & use of these may incur a fee but we some income generation is required for the centres longevity)*

Dignity for all.

There are 0 changing places within the Harborough District. Only 15 changing places in the whole of Leicestershire, let's hold Lutterworth to a higher standard.

'I don't like being changed on a dirty toilet floor. Sometimes, a park or cafe will have a Changing Places Toilet. A hoist and a changing bed. I can lie down safely. My mum and Dad do not hurt their backs. I am treated with respect and decency.'

EMILY, 7.

'More buildings, venues and establishments need Changing Places toilets, they are exceptional and an absolute game changer for disabled people.'

AMY HOOK, FULL-TIME WHEELCHAIR USER.

ARE YOUR DAY-TO-DAY ACTIVITIES LIMITED BECAUSE OF A HEALTH PROBLEM OR DISABILITY WHICH HAS LASTED, OR IS EXPECTED TO LAST, AT LEAST 12 MONTHS? INCLUDE PROBLEMS RELATED TO OLD AGE

Area	Day-to-day activities limited a lot	Day-to-day activities limited a little	Day-to-day activities not limited	Total population
Lutterworth Brookfield	132	217	1,979	2,328
Lutterworth Orchard	182	225	1,820	2,227
Lutterworth Springs	209	265	1,823	2,297
Lutterworth Swift	131	212	2,158	2,501
Lutterworth total	654	919	7,780	9,353
Harborough district	5,048	7,376	72,958	85,382

Source: 2011 Census question



All site signage will also be in Braille.

“It is hard to overstate the importance of something as simple as an accessible area for the over 250,000 people nationwide who have a severe disability.”

TRANSPORT ACCESSIBILITY MINISTER CHRIS HEATON-HARRIS 2020



The Changing Places facility will be open 365 days a year accessible by radar key.

Who are they for?

In the UK the number of people who would benefit from a Changing Places toilet would include approximately:

40,000

People with profound and multiple learning disabilities

130,000

Older people, including people with Dementia and Alzheimer's

30,000

People with muscular dystrophy and neuromuscular conditions

30,000

People with cerebral palsy

13,000

People with an acquired brain injury

8,500

People with Multiple Sclerosis

“Changing Places toilets give disabled people and their carers the space and equipment they need to have the confidence to leave their homes and go out”

**BUILDING ACCESSIBILITY
MINISTER LORD GREENHALGH
2020**

Thermo-Flooring

Thermo-Floor underfloor heating systems provide heating where it is needed most, at floor level. The concept has been around

for centuries, first used by the Romans who warmed air by an open fire which passed through voids below their dwellings. Today

underfloor heating systems are far more advanced and are the 'next generation'.

The majority of the cost in adding underfloor heating comes from work on the floor itself, that will already be taking place while levelling & refurbishing.



How Does Underfloor Heating Work?

Thermo-Floor underfloor heating systems work by passing warm water through pipes laid within the floor structure. The heat from the pipe is transferred to the floor

surface, this results in the whole floor surface being kept at the same warm temperature. Thermo-Floor underfloor water heating systems can be powered by any

heat source, for example boilers, ground and air source heat pumps, wood chip burners and biomass boilers.

Why Choose Underfloor Heating?

Costs

It is more cost effective - Thermo-Floor underfloor heating systems could save you between 15 - 30% on your heating bills as it reduces energy consumption.

Natural

It is natural heat - Thermo-Floor underfloor heating systems heat the room by radiant heat. Conventional heating can cause hot/cold spots that mean only the temperature at the thermostat is

accurate. Elsewhere in the room temperature fluctuations are likely.

Health

It is healthier - Radiant heat reduces the risk of allergies and the spread of germs and it prevents

dust and air circulation and virtually eliminates dust mites in carpets.

Looks

It looks great - An underfloor water heating system is out of sight so there is no need to accommodate

radiators, therefore offering more wall space & better access.

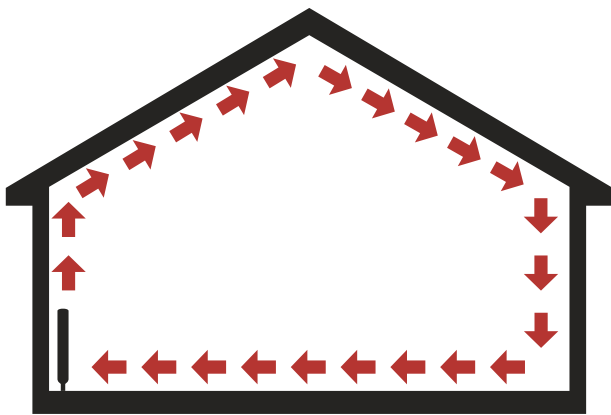
Silence

It is silent - An underfloor heating system does not use copper pipes so there are no moans and groans.

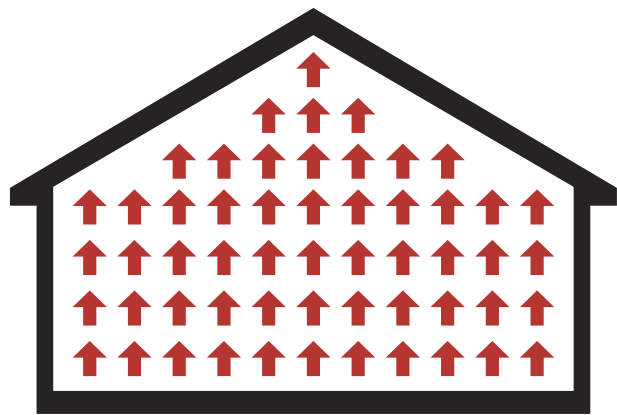
Flexibility

It is flexible - With a Thermo-Floor underfloor water heating system different rooms can be set to different temperatures at the same time using the same manifold.

The heat dispersion patterns of conventional radiators vs. underfloor heating is one of the reasons for its eco-credibility.



Radiator



Underfloor Heating

Radiant heat from underfloor heating means room temperature can be set 2 or 3 degrees cooler than conventional heating from radiators. This means lower heating costs and more eco-

friendly efficiencies. As heat from underfloor heating is directly interacting with people above, Solar heating panels can reach the temperatures required for effective underfloor heating. Although not

included with these renovations, it allows scope for cheap, easy upgrades to the infrastructure that will also help the community centre run self-sufficiently.



The always accessible Changing Place can be kept warm at minimal cost even when the rest of the building is empty with temperature zone control.

The community centre as it is today.

The present condition of the Church Gate community centre is such that it is rarely used except for storage & to support the work of foodbank & other vital existing groups which frankly deserve better.

The primary issues are access

in terms of; entrances, exits & corridors. Heating & lighting, a considerable state of disrepair, & rooms which require reordering. There are inadequate facilities for meaningful community use & poor access & services for people with

disabilities.

The photographic evidence and notations hereafter will support this.



We plan to create a hub in this open space which will signpost vital services & connect with Lutterworth based partnerships like SNACS.



At present the meeting rooms are dark and hard to access. We would like to create one open and light meeting area for renting out within the community and as a resource to support volunteer activity. This could generate a small amount of income for the longevity of the community centre.

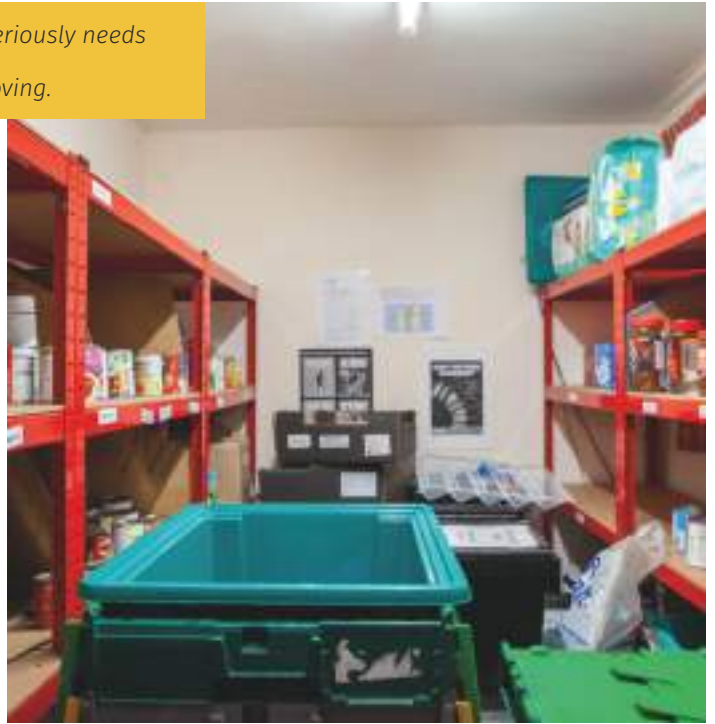


At present the 'office' which runs the community centre is not fit for purpose and is predominantly used for storage. We suggest adding this space into one of the wider open plan areas of the renovated community centre.

Cramped facilities for Foodbank & volunteers.

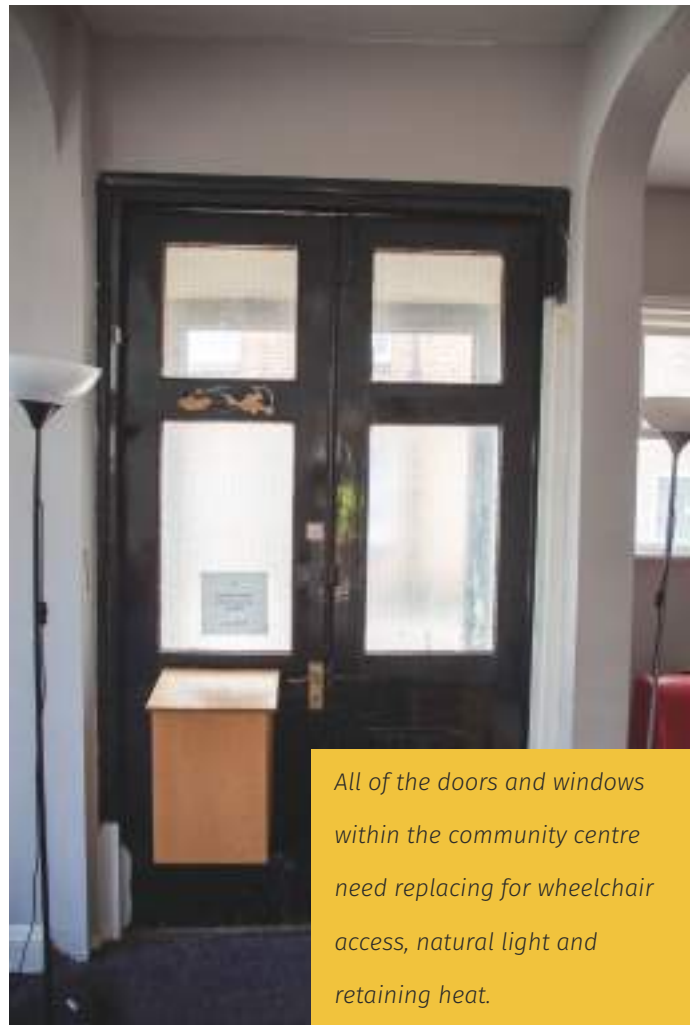


Accessibility seriously needs improving.



At present the kitchen area is very small and a challenging workspace. It is inaccessible for people with certain disabilities and does not have the room to accommodate more than one person – absolutely no scope for being hospitable or sociable. We would like to build a servery area with worktops and sinks accessible to all and to encourage peer support, collaboration and socialising.





All of the doors and windows within the community centre need replacing for wheelchair access, natural light and retaining heat.



The general state of disrepair is evident.





The building as a whole is cold and dark and requires extensive renovation and refurbishment.

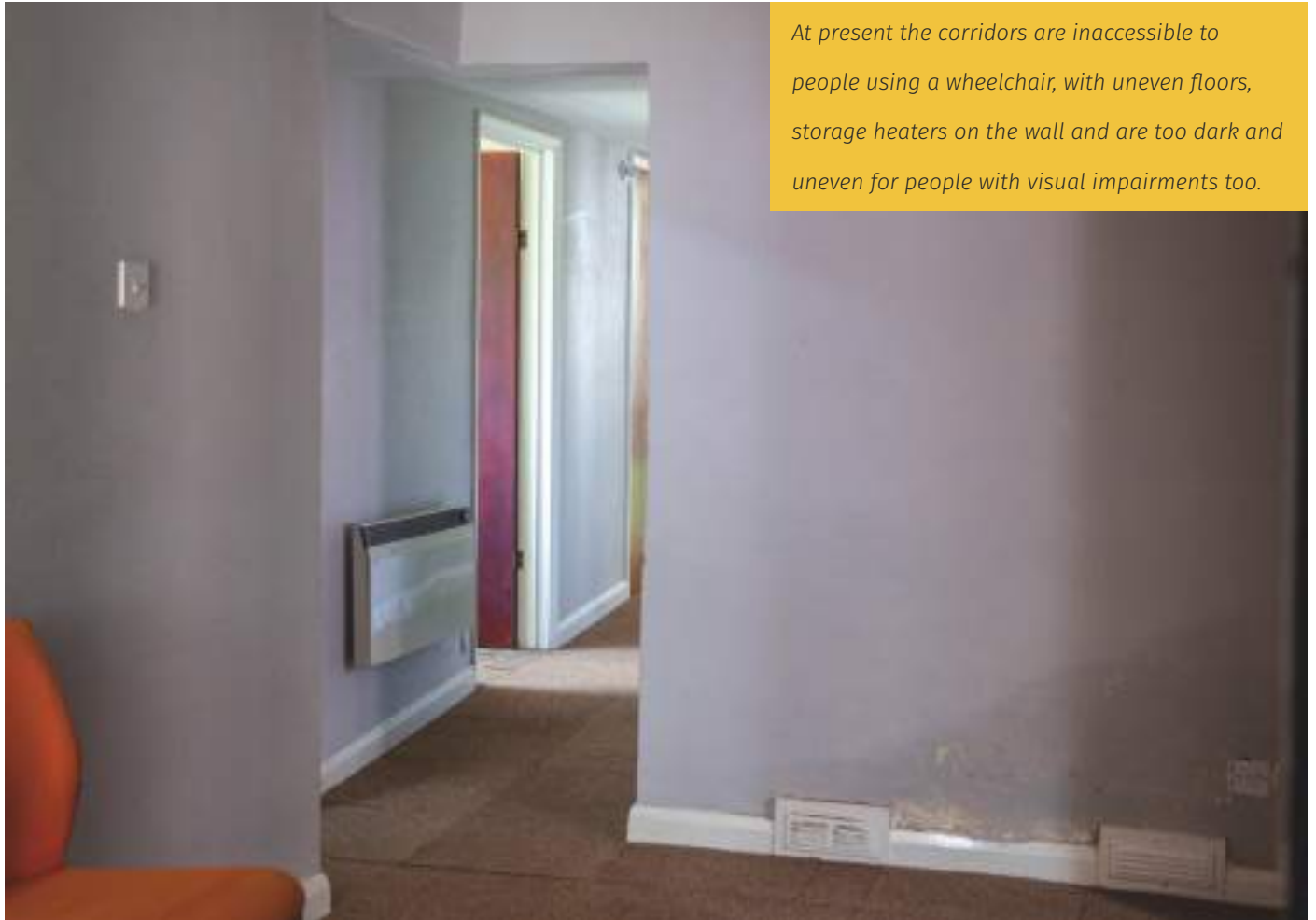




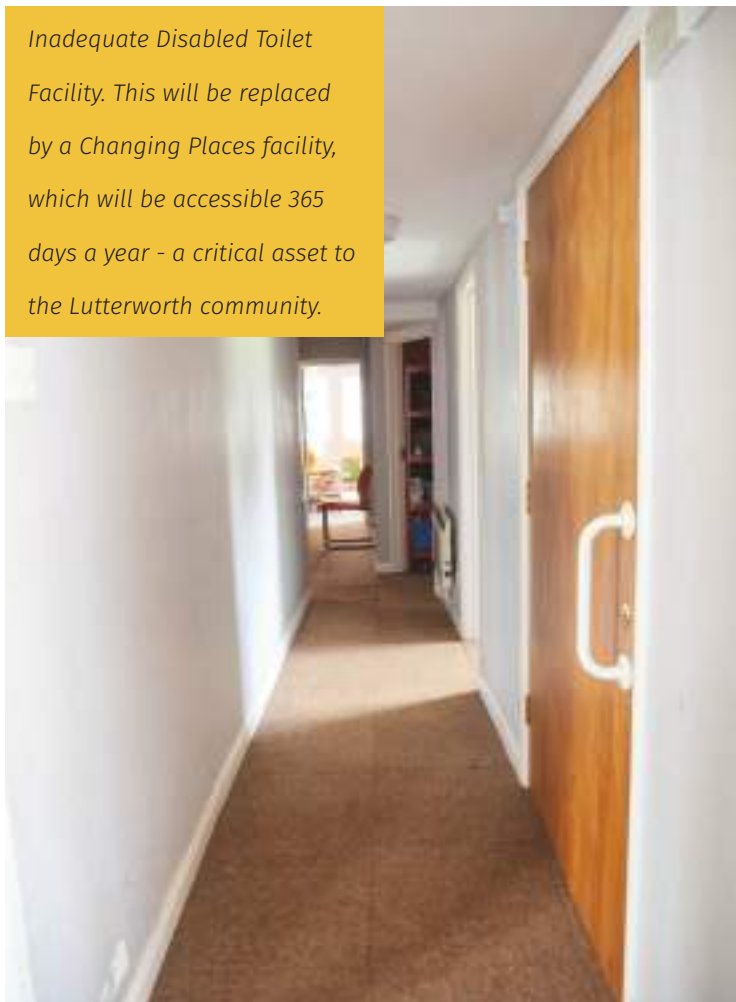
The floor needs to be level and we propose the installation of underfloor heating for efficiency and eco credentials.

Under floor heating is more cost efficient: Thermo-Floor underfloor heating systems could save you between 15 - 30% on your heating bills as it reduces energy consumption' and we should all be looking to renovate or build as sustainably as possible.





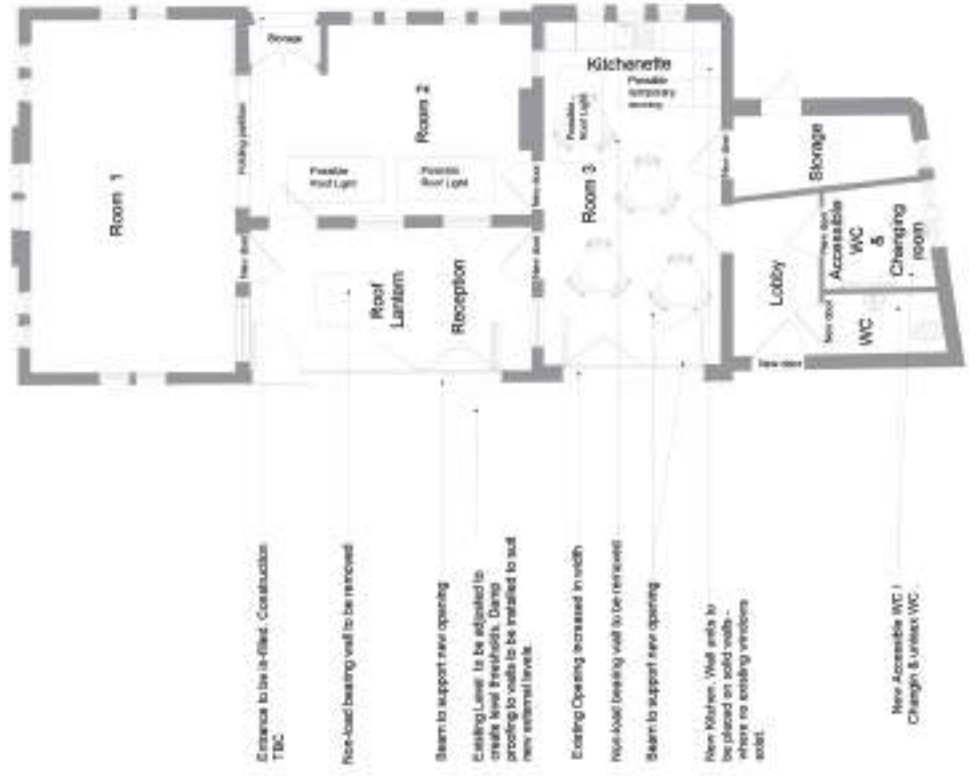
At present the corridors are inaccessible to people using a wheelchair, with uneven floors, storage heaters on the wall and are too dark and uneven for people with visual impairments too.



Inadequate Disabled Toilet Facility. This will be replaced by a Changing Places facility, which will be accessible 365 days a year - a critical asset to the Lutterworth community.

We plan to only use local, ideally Lutterworth based service providers for all aspects of the New Churchgate Community Centre Renovation.

CONSTRUCTION OF THIS PLAN IS SUBJECT TO THE APPROVAL OF THE LOCAL AUTHORITY AND THE ARCHITECTS' LIABILITY IS LIMITED TO THE DESIGN OF THIS PLAN. THE ARCHITECTS' LIABILITY IS LIMITED TO THE DESIGN OF THIS PLAN.



- Entrance to be in-filled. Constructed TBC
- Rice-load bearing wall to be removed
- Beam to support new opening
- Existing Level to be adjusted to create level thresholds. Damp proofing to walls to be installed to suit new external levels.
- Existing Opening increased in width
- Rice-load bearing wall to be removed
- Beam to support new opening
- New Kitchen. Wall ends to be placed on solid walls - where no existing windows exist.
- New Accessible WC / Changing & Unisex WC

Proposed Ground Floor Plan
Scale 1:100 @A3

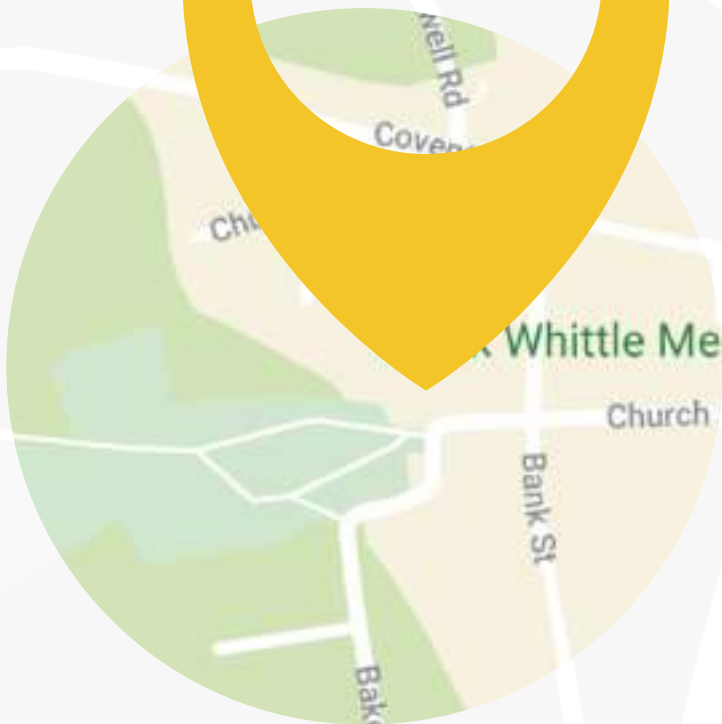
NOTE:
Floor Levels to be made consistent throughout.


Client	Churchgate Community Centre Community and Neighbourhood	Project No.	1004
Drawn	J. Smith	Proposed Ground Floor Plan	
Date	12.05.2021	Sheet No.	01
Scale	As Noted @ A3	Client Ref.	1004
		100 Churchgate Community Centre Churchgate Community Centre 100 Churchgate Community Centre 100 Churchgate Community Centre	



A big fish.

Lutterworth has played its part in world history. As the work place of John Wycliffe – Bible translator – and later Frank Whittle – designer of the jet engine – the impact of our small town has been seen the world over. This building has stood at the heart of the community of over 800 years and is a place of memory for local families





**Frank Whittle
Museum**

Worth preserving.

Listed street in the heart of the town centre and at the gates of an internationally significant St Mary's Church of Lutterworth

**A Famous
Building**

**That Bench
& That.**

St Mary's Rd

Church Cl

George St



**The
Community
Centre**

Frank W

Church St

Church St

Bank St

Church Gate

221b.

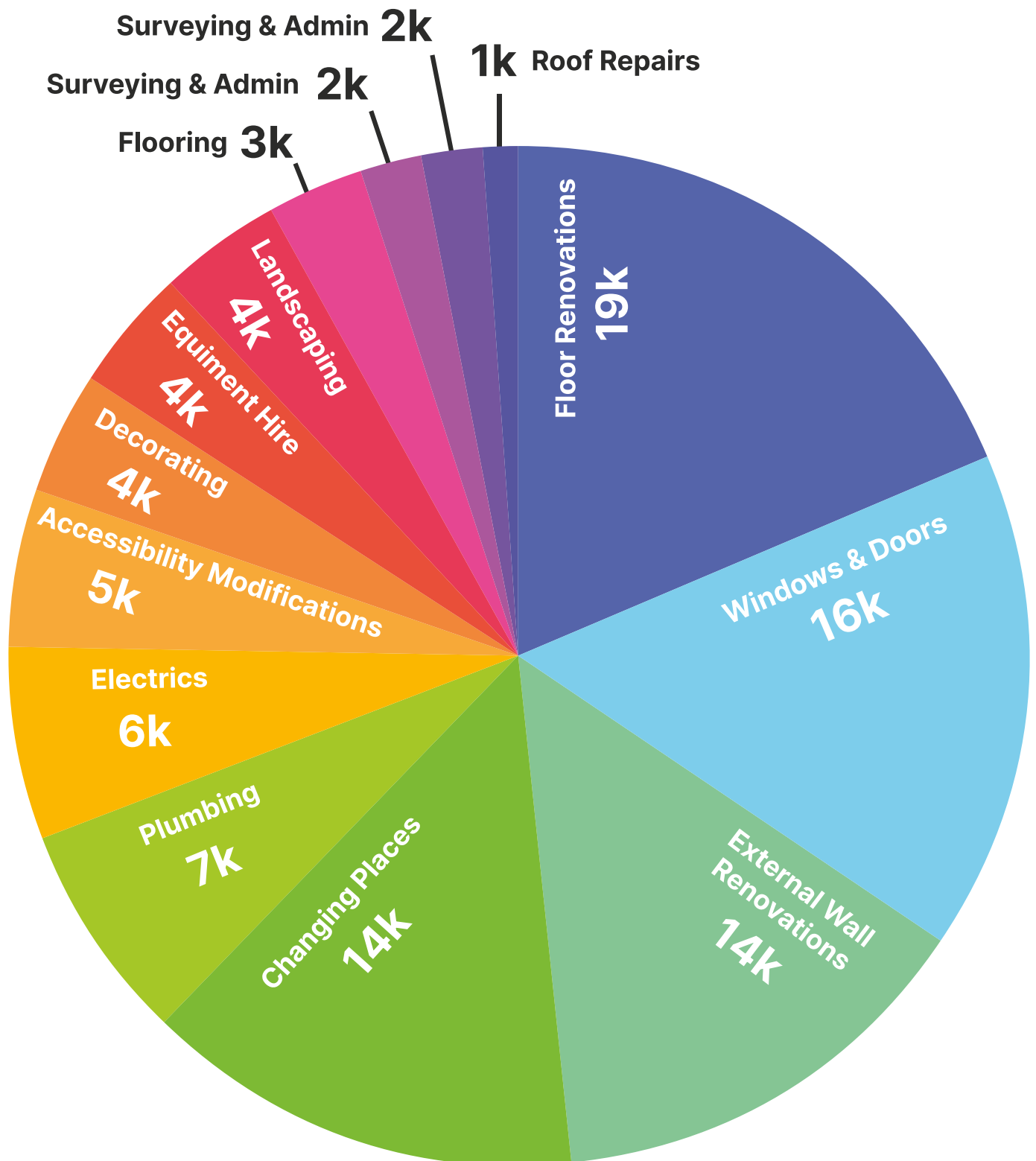
Woodbine Cres

Bank St

Baker St

Where the money is going.

Lutterworth has played its part in world history. As the work place of John Wycliffe – Bible translator – and later Frank Whittle – designer of the jet engine – the impact of our small town has been seen the world over. This building has stood at the heart of the community of over 800 years and is a place of memory for local families



Local suppliers & services

Affordable Carpets
Carpeting
Croft

William Humphreys Surveying
Building Surveys
Market Harborough

Hawthorne House PR
Public Relations
Dunton Bassett

Thermo Flooring
Underfloor Heating
Lutterworth

Pickfords Plastering
Plastering
Littlethorpe

SNACS
Project Consultation
Lutterworth

IMA Architects
Architects
Blaby

Johnny
Bespoke Design
Stoney Stanton

Theresa Mathieson Care
Project Consultation
Walton

Minute Man Press
Printing Services
Lutterworth

Astor Bannerman
Changing Places Build & Design
Cheltenham

Kevin Electrical
Electrics
Leicestershire

Attic Toast
Marketing
Wigston Parva

Harborough District Council
Project Consultation
Market Harborough

Andy Joiner
TBC
Leceistershire

SBC Projects
Builders
Walton

Lutterworth Town Council
Project Consultation
Lutterworth

Foodbank
Project Consultation
Lutterworth

Astley Kitchens
Kitchen Interior
Broughton Astley

St Mary's Church
Project Consultation
Lutterworth

Funding the Community Centre

Funding Supplier	Applied?	Type of Funding
Lutterworth Area Community Fund	✓	Grant
Derbyshire Environmental Trust	✓ (Requires fundmatching)	Grant
Shires Environment Grant	×	Grant
Section 106 Funding	×	Grant
Shires Community Community Grant	×	Grant

